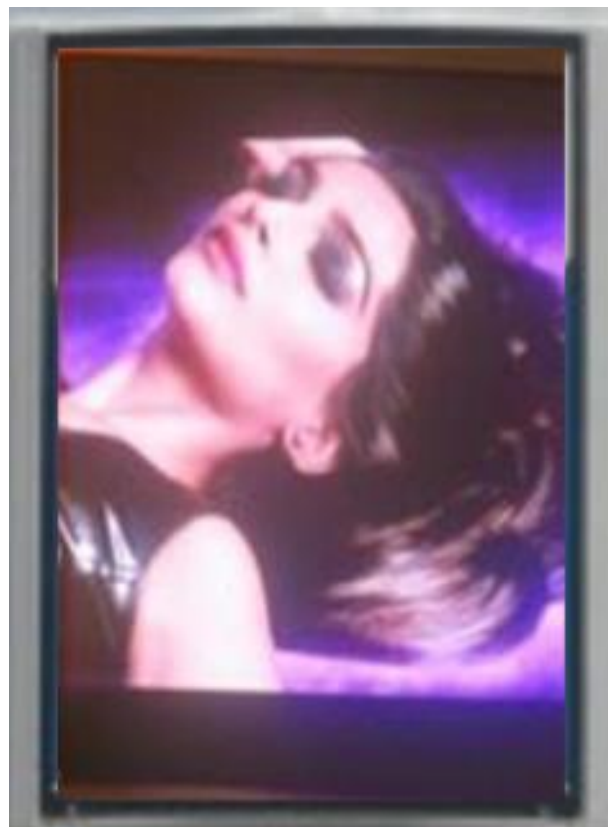


Smart Digital Billboard- VBV-KT0-60

The Smart Digital Billboard is an IP based outdoor LED billboard on to which any digital advertisements can be displayed. The advertisements on the billboards are controlled by the Central Ad Server. The application controls the ads on all the billboards on the smart pole. The administrator can specify the location, time slots and duration during which the ads should run. The application then pushes those ads onto the billboard controller. The controller will then play those ads according to the policies specified by the Central Ad Server.



TECHNICAL SPECIFICATIONS

➤ LED DISPLAY SCREEN PARAMETERS

S.No	Parameter	Value	Unit
1	Pixel pitch	8	mm
2	Led Make	King Light	-
3	Minimum viewing distance	8	Meter
4	Brightness	>6500	nit
5	IC Driver	Chipone 5020	-
6	Ingress protection (Front/Rear)	IP65	-
7	Operating temperature	-40 ~ +60	Degree

#779, 1G2, 2nd Floor, Kaikondrahalli, Sarjapura Road, Bengaluru - 560035.

Phone: +91-80-42011550

www.iramtech.com



S.No	Parameter	Value	Unit
8	Operating humidity	10% ~ 90%	-
9	Pixel configuration	3 in 1	RGB
10	Brightness Control	256	Level
11	Grey scale	32768	Level
12	Brightness control	256	Level
13	Refresh frequency	>600	Hz
14	Driving mode	Dynamic 1/4 Scan Constant Current Driving	-
15	Blind Spot Rate	<1/10000	-
16	Lifetime at 50% brightness	1,00,000	Hours

➤ LED PARAMETER

17	Led Make	King Light	-
18	Red wavelength (Typical)	623	Nm
19	Green wavelength (Typical)	525	Nm
20	Blue wavelength (Typical)	470	Nm
21	Viewing angle-H	120 (+60/-60)	deg.
22		120 (+30/-30)	deg.

➤ MODULE PARAMETER

23	Pixel Pitch	8	Mm
24	Pixel Configuration	SMD	All color
25	Pixel matrix per module	32x16	dot
26	Module size	256*128	mm

➤ CABINET PARAMETER

27	Cabinet material	Iron Powder Coated	-
28	Cabinet Size	1024*1024, 768*738	mm
29	Cabinet Weight	25 to 50	Kg

➤ POWER CONSUMPTION

30	Input voltage (AC)	110 ~ 240	V
31	Input power frequency	50 or 60	Hz
32	Power Consumption per Sq.m Maximum	600	W
33	Power Consumption per Sq.m Minimum	230	W

➤ CONTROLLING & OPERATING SYSTEM

34	Signal input format (with video processor)	AV, S-video, VGA, DVI, YPbPR, HDMI, SDI	-
35	Operating system	Windows (2000/XP/Vista)	-
36	Data Transfer Method	RJ 45, USB	-
37	Control distance	CAT5 cable <100m , Single fiber <10km	-
38	Storage for Videos	32	GB